



High Point Richmond Hill Road, Birmingham, B15 3RU

£280,000

Hadleigh Estate Agents are delighted to offer this three bedroom ground floor apartment for sale. Offered with NO UPWARD CHAIN this spacious three bedroom apartment is located within the sought after development High Point located on Richmond Hill Road, Edgbaston.

With secure entrance on the ground floor this property comprises of a spacious entrance hall, three double bedrooms with built in storage, bathroom, kitchen and living / dining room with access onto the rear terrace. The ground floor apartment further benefits from having its own garage en-bloc.

Location



High Point is conveniently located for easy access onto Harborne High Street, offering an array of bars, restaurants and local supermarkets. Edgbaston Village is close at hand, along with excellent transport links into Birmingham City Centre. A short walk away is The University of Birmingham and Queen Elizabeth Hospital with a number of local independent and private schools close at hand.

Entrance Hall

Spacious entrance hallway with storage cupboards, carpeted flooring and ceiling light point. Giving access to bedroom one, living room and kitchen.

Lounge Diner



Extensive lounge diner, boasting UPVC double glazed windows and patio door leading to your own patio area. Two wall lights, ceiling light point and ceiling rose, carpeted flooring and electric heaters.

Kitchen



Fitted kitchen with a range of base and wall units, plumbing for utilities and cooker. Tiled flooring, stainless steel sink and drainer unit and double glazed window.

Bedroom One



Large double bedroom offering fitted wardrobes, double glazed windows, carpeted flooring and electric heater.

Bedroom Two



Boasting a further large double bedroom, complete with fitted wardrobes, double glazed windows, electric heater and ceiling light point.

Bedroom Three



Double bedroom with double glazed windows to the front elevation, carpeted flooring, built in wardrobes and electric heater.

Bathroom



Modern fitted bathroom with bath and electric shower over. Low level flush WC, hand wash basin and electric towel radiator. Ceiling light point and opaque glazed window.

External



The apartment has access to its own patio area, along with private garage and shared access of the communal grounds.

General Information

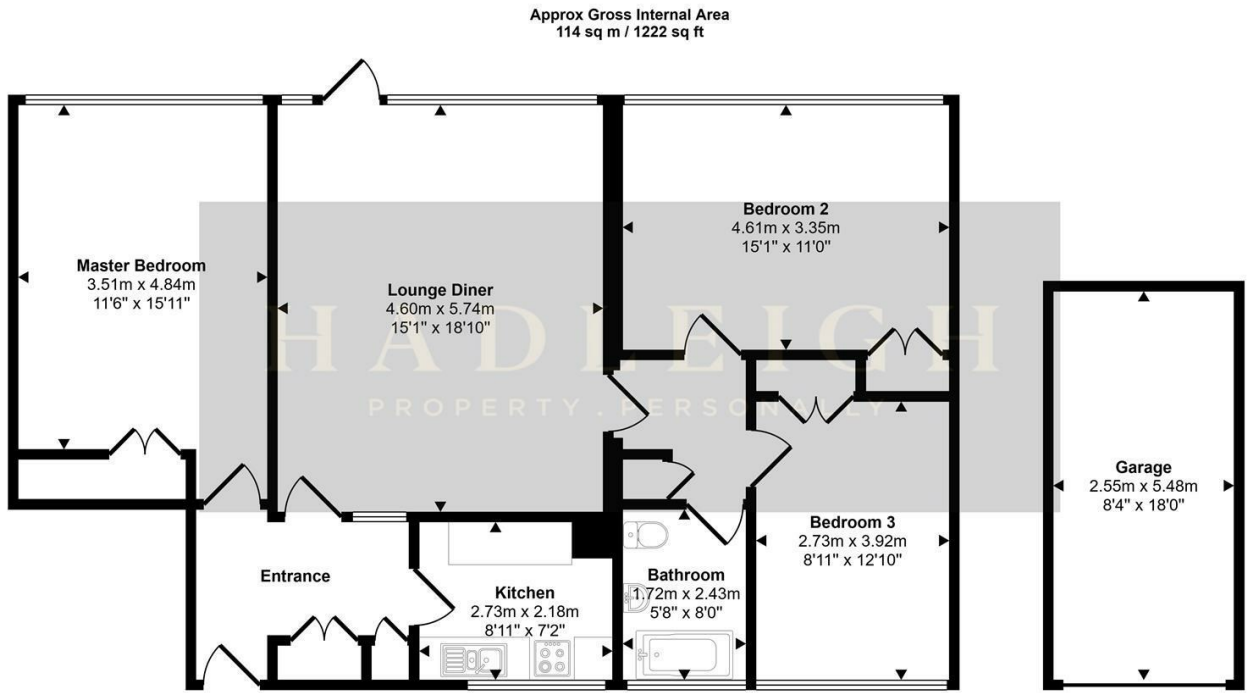
Please note, we have been advised that the property is leasehold and hold the following lease information

Remaining lease: 123 years, expiring on 26th September 2149

Service charge: £2392.64

We advise any interested party to confirm the above with their legal representative as Hadleigh Estate Agents cannot be held liable.

Floor Plan

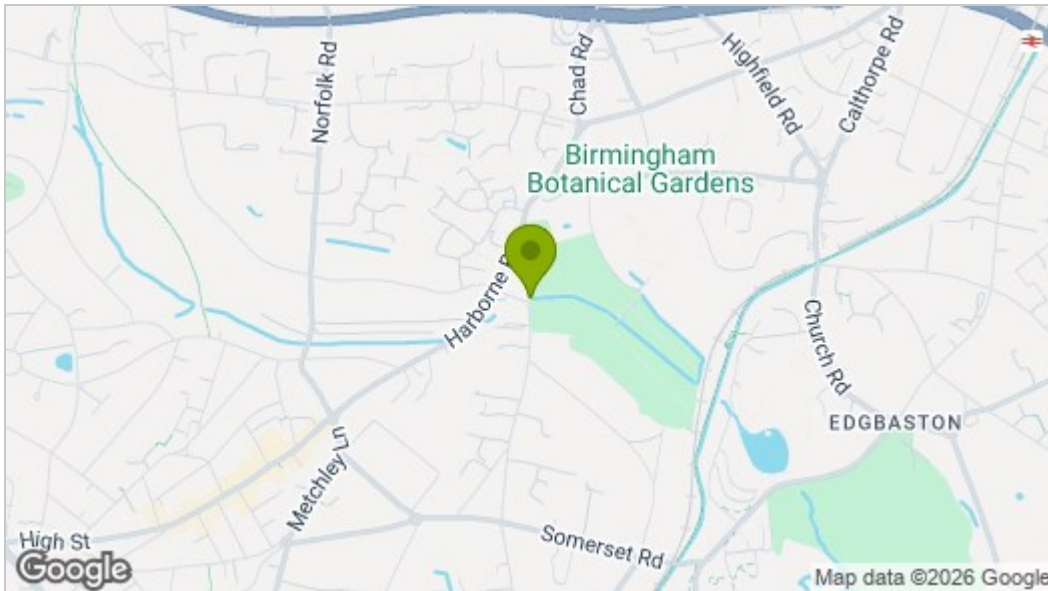


Floorplan
Approx 99 sq m / 1071 sq ft

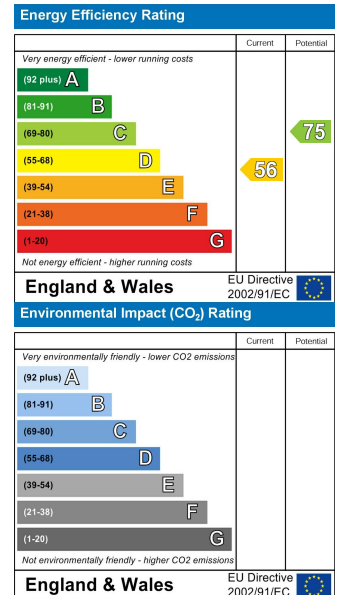
Garage
Approx 14 sq m / 150 sq ft

This floorplan is only for illustrative purposes and is not to scale. Measurements of rooms, doors, windows, and any items are approximate and no responsibility is taken for any error, omission or mis-statement. Icons of items such as bathroom suites are representations only and may not look like the real items. Made with Made Snappy 360.

Area Map



Energy Efficiency Graph



These particulars, whilst believed to be accurate are set out as a general outline only for guidance and do not constitute any part of an offer or contract. Intending purchasers should not rely on them as statements of representation of fact, but must satisfy themselves by inspection or otherwise as to their accuracy. No person in this firm's employment has the authority to make or give any representation or warranty in respect of the property.