



17a Woodville Road, Harborne

£925,000 Freehold

Hadleigh Estate Agents are delighted to offer this substantial detached property for sale. Situated on the ever popular Woodville Road the property boasts spacious living accommodation and large rear garden. The property comprises of a large driveway, allowing for multiple cars to be parked. Modern porch and welcoming hallway. Benefitting from two spacious reception rooms, with traditional features and large windows allowing for natural light to flood the property. Modern fitted kitchen and dining area, with further access to the rear garden. Large utility area, downstairs guest WC and internal access into the large garage.

H

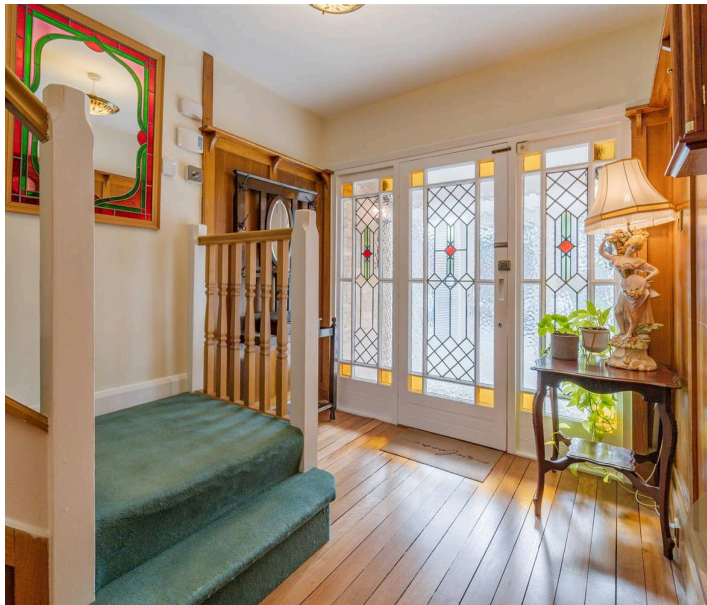


Location

Woodville Road is a short walk away from Harborne High Street offering an array of fantastic amenities. Being situated within one of Birmingham's most sought after neighbourhoods and ranking within The Times top 10 places to live. Queen Elizabeth Hospital, Birmingham University and Medical Quarter are within easy reach, as is Birmingham city centre via arterial road and transport links, such as A456 connection to M5 access and University train station. Excellent primary, secondary and prep schools are very close by such as the popular Harborne Primary school, and a very short walk to Baskerville School, with Edgbaston High School for Girls, The Priory School and The King Edward Foundation Schools, along with Hallfield Preparatory School, West House, The Blue Coat and St George's Schools a short commute. Leisure facilities

Entrance Porch

Double glazed windows and door, Terrazzo marble flooring and two wall mounted lights. Leading into hallway through a traditional stained glass door.



Hallway

Welcomed by original Oak flooring, two ceiling light points, gas central heating radiator and panelled walls.

Lounge Diner

Boasting parquet wooden flooring, four wall light points and original working fire with tile surround and hearth. Double glazed bay window to the front elevation, two gas central heating radiators and ceiling coving.





Lounge

Original Oak wooden flooring and double glazed sliding patio doors leading to the garden. Original working fire with tile surround and hearth, gas central heating radiator, four wall and one ceiling light points.

Kitchen Diner

A fantastic fitted kitchen with a range of wall and base mounted cabinetry, two integrated under counter fridges, roll worktop surfaces, stainless steel sink with mixer tap over, double glazed windows and sliding patio door opening to garden allowing for ample natural light. Fitted appliances including Bosch oven/grill and oven below, four ring gas hob with 'Neff' extractor hood above, integrated 'Neff' dishwasher, two ceiling flush lights, further light points including under unit strip lighting, tiling to splash back areas, tall radiator.



Utility Room

Spacious utility area, allowing for plumbing for washing machine and sink unit, along with vent for tumble dryer. Double glazed window and patio door to rear elevation. Pitched ceiling with two 'Velux' skylights and strip light, power points and bi-folding doors opening into garage. Further benefitting from ample understairs storage space.





Guest W.C

Low level WC, wash hand basin, window to side elevation and ceiling light point.

Garage

Large garage with Bi-folding doors, ceiling strip light, fuse board, water cylinder and Worcester boiler.

First Floor Landing

Carpeted stairs and landing, window to side elevation, gas central heating radiator, ceiling light point and coving.

Bedroom Two

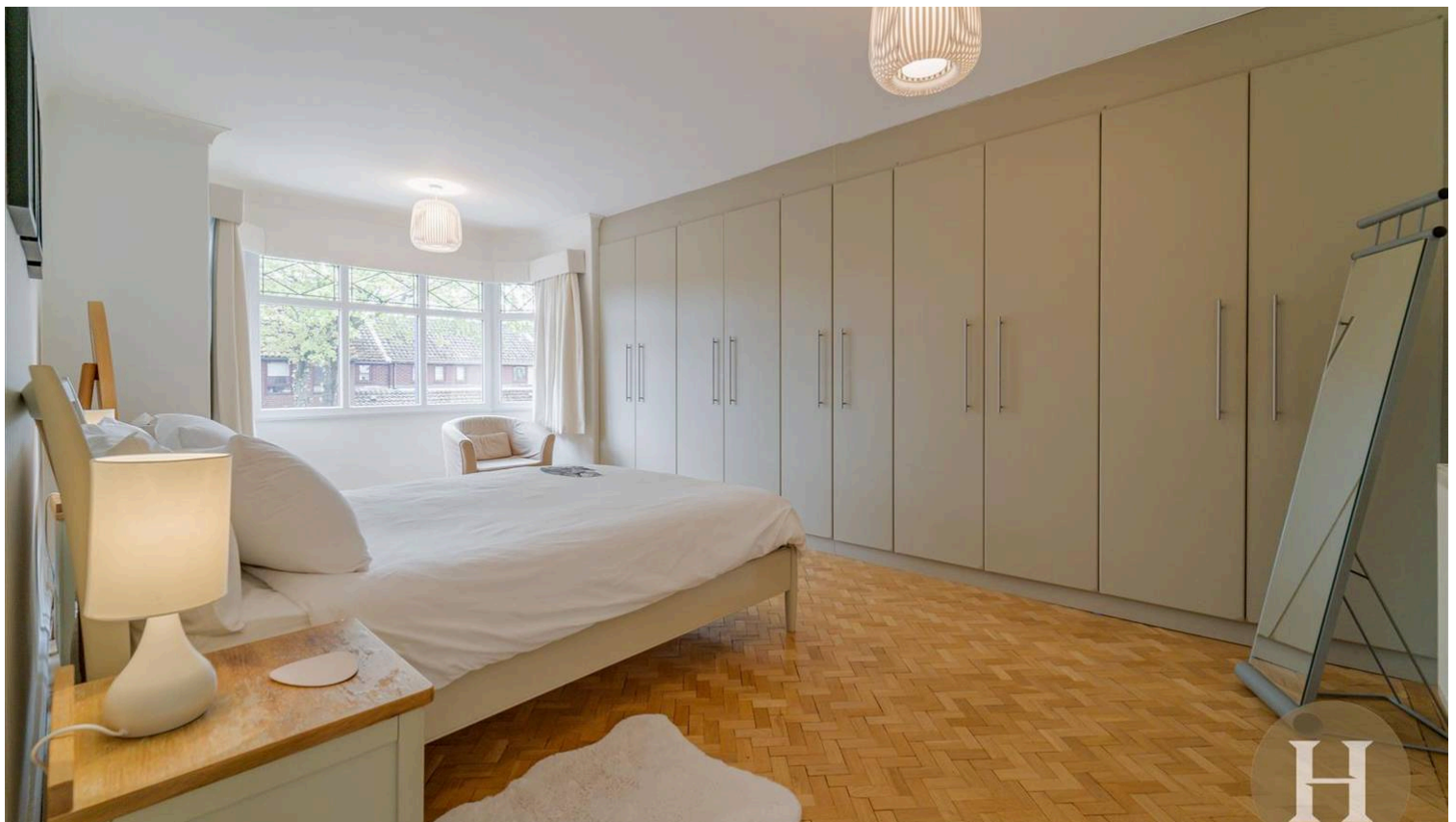
Double glazed bay window to front elevation, Parquet wooden flooring and bespoke full width fitted wardrobes. Gas central heating radiator and two ceiling light points.

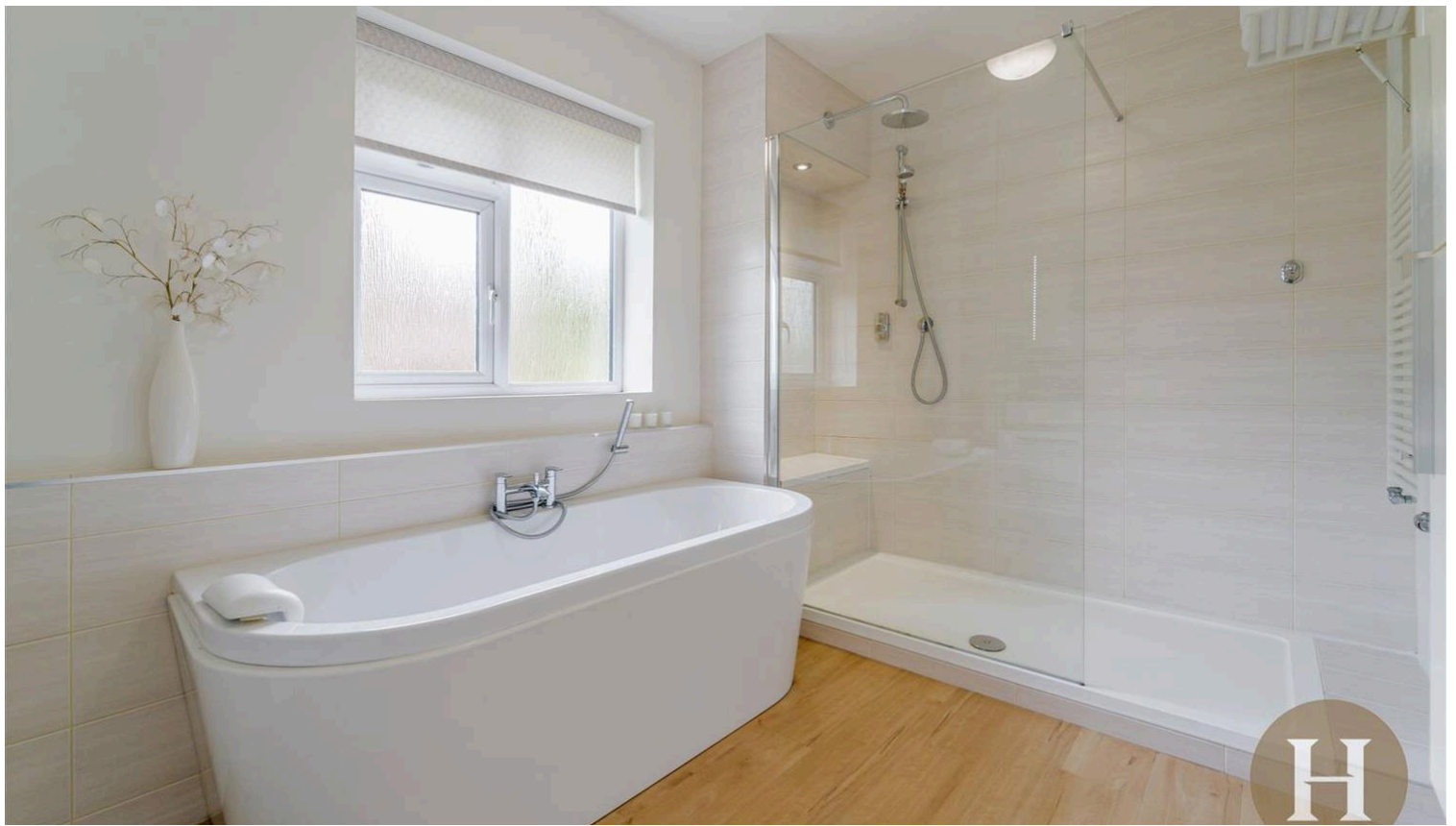
Bedroom Three

Double glazed window to rear elevation, carpeted flooring, two ceiling light points and gas central heating radiator.

Bedroom Four

Dual aspect double glazed windows to front elevation, carpeted flooring, three ceiling light points with dimmer switch, gas central heating radiator and further benefitting from access to the study.





Study

A fantastic room, allowing for multipurpose as a study or dressing room. Double glazed window to rear elevation, gas central heating radiator, ceiling light point and carpeted flooring.

Bathroom

Modern bathroom suite, comprising of his & hers floating wash hand basins with mixed taps and fitted mirrors above. Large walk in shower with mains rain shower head and adjustable hand held hose, plus ceiling spotlight. Freestanding bath with handheld shower, partially tiled walls and obscure glazed window to rear elevation. Completed with ceiling light point, towel radiator and storage unit.

W.C

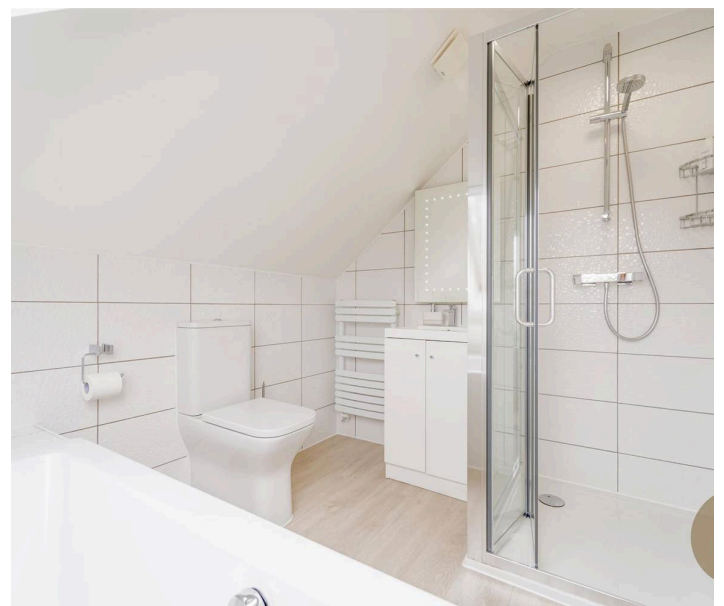
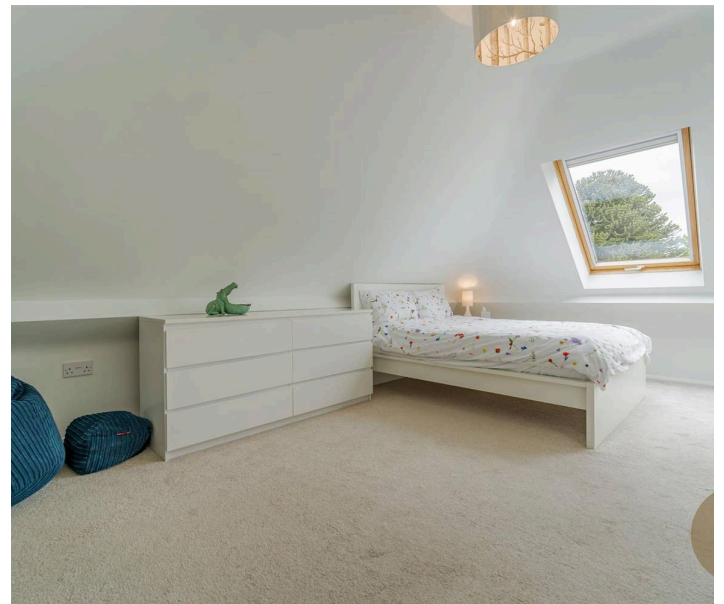
Low level WC, hand wash basin within vanity unit. Obscure double glazed window to side elevation and ceiling light point.

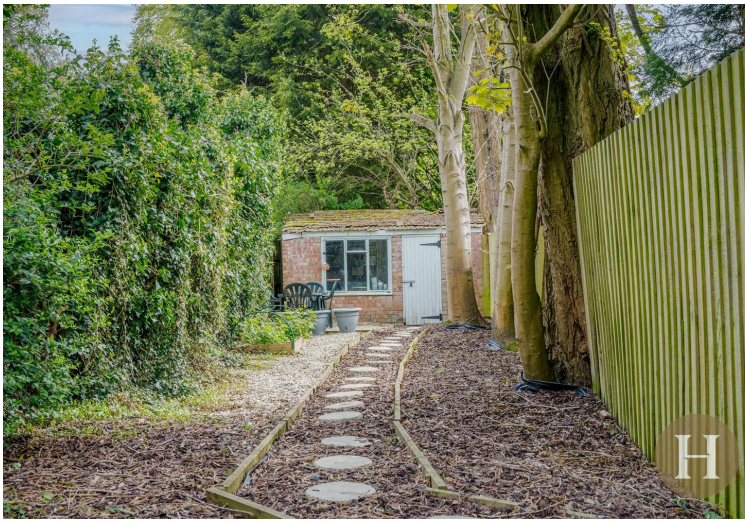
Master Bedroom

Boasting Velux' skylights, carpeted flooring and fitted wardrobe. Also giving access to eaves storage, radiator and ceiling light point.

Ensuite

Velux skylight, tiled walls, matching suite of low level WC, bath and sink within vanity unit, plus corner shower cubicle with adjustable hose, extractor fan and ceiling light.





Council Tax band: F

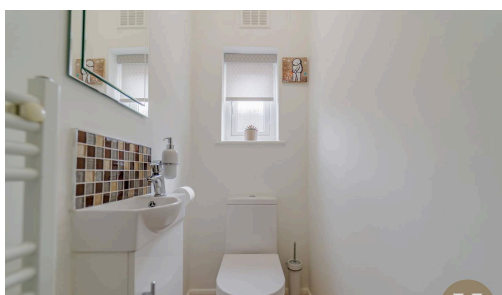
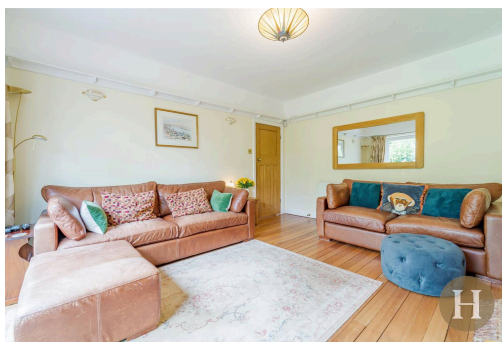
Tenure: Freehold

EPC Energy Efficiency Rating: E

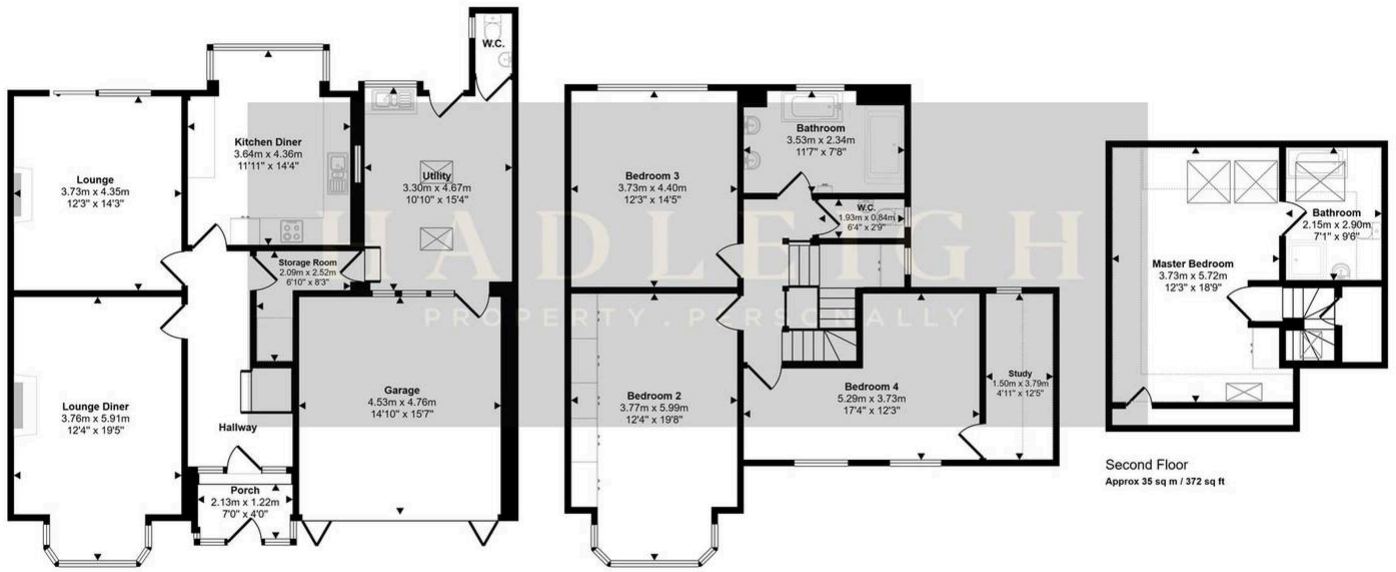
EPC Environmental Impact Rating: F



- Substantial detached home
- Two reception rooms with period features
- Four double bedrooms
- Large rear garden with patio & outbuildings



Approx Gross Internal Area
229 sq m / 2463 sq ft



Ground Floor
Approx 113 sq m / 1212 sq ft

First Floor
Approx 82 sq m / 879 sq ft

Second Floor
Approx 35 sq m / 372 sq ft

Denotes head height below 1.5m

This floorplan is only for illustrative purposes and is not to scale. Measurements of rooms, doors, windows, and any items are approximate and no responsibility is taken for any error, omission or mis-statement. Icons of items such as bathroom suites are representations only and may not look like the real items. Made with Made Snappy 360.