



Flat 17, Timber Mill Court Serpentine Road, Harborne

£125,000 Leasehold

Hadleigh Estates are pleased to present this two bedroom flat at Timber Mill Court, Harborne. Timber Mill Court is a dedicated retirement facility and benefits from a 24 hour alarm pull system. The flat is approached via a communal entrance hall with security entry phone. Inside briefly comprises; reception hall, living room, kitchen, two bedrooms and bathroom with ample storage cupboards. Outside there are well maintained communal grounds and residents parking.



Council Tax band: C

Tenure: Leasehold

Years Remaining: 119

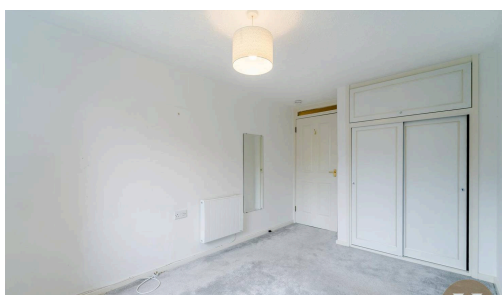
Service Charge PA: £3,456

EPC Energy Efficiency Rating: E

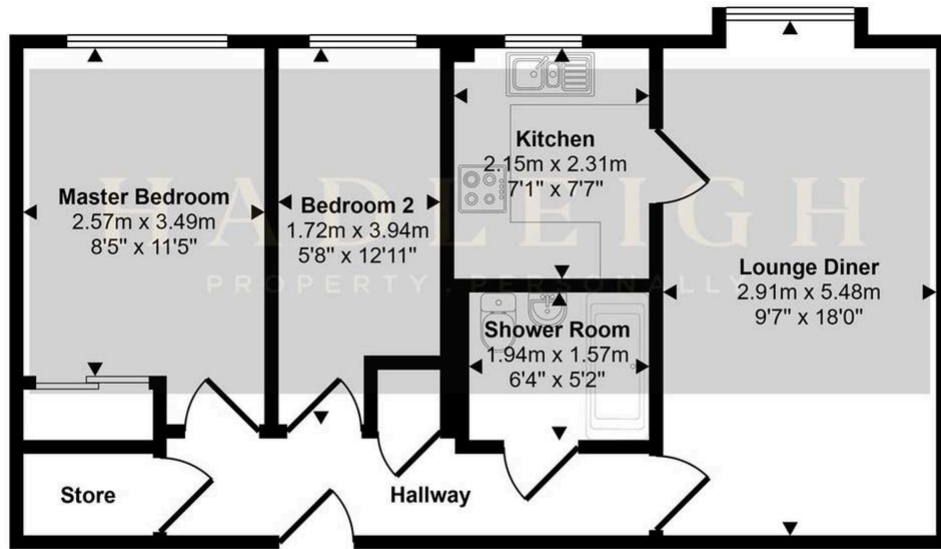
EPC Environmental Impact Rating: E



- › Two bedroom retirement apartment at Timber Mill Court
- › 24-hour emergency alarm system & secure entry
- › Communal grounds & residents parking
- › Walking distance to Harborne High Street



Approx Gross Internal Area
51 sq m / 546 sq ft



Floorplan

This floorplan is only for illustrative purposes and is not to scale. Measurements of rooms, doors, windows, and any items are approximate and no responsibility is taken for any error, omission or mis-statement. Icons of items such as bathroom suites are representations only and may not look like the real items. Made with Made Snappy 360.