



54 Hamilton Avenue, Birmingham, B17 8AR

Asking Price £1,399,950

A fantastic opportunity to acquire this handsome four-bedroom detached family home located on one of Harborne's prestigious residential addresses, Hamilton Avenue. This property provides a spacious living accommodation set over two impressive floors benefitting from including an indoor swimming pool and bar to the rear, property posing as perfect entertainment and family space. Approached from the road through gated access which encloses a large driveway providing parking for multiple cars an integrated garage.

Entered via an enclosed porch with a glazed inner door leading onto the grand entrance hallway. From the entrance hall are three reception rooms boasting some of the properties original features which are to be appreciated. The front reception room includes a bar and beautiful exposed brick fireplace. The rear reception room and dining room follow on from this through excellently preserved original archways with coving. An array of natural light is displayed throughout the ground floor through bay windows to the front and rear elevation. The property includes a secondary reception room and dining room which enters onto the kitchen utility room and storage room with provide access to the garden.

The first floor of the property comprises of four large double bedrooms, two of which include EN-suite bathrooms. All bedrooms include fitted wardrobes and ample space throughout. To the rear of the property is an impressive indoor swimming pool and bar which has been proved to be a fantastic family and entertainment space. This room leads onto the large, well maintained private garden with mature shrub beds.

Location



Hamilton Avenue is well positioned providing easy access to public transport and excellent links to the motorway network. There is easy access to Birmingham International Airport and The National Exhibition Centre. Birmingham University and the Queen Elizabeth Hospital complex are all within a two mile radius of the property. A wide range of schools for children of all ages are available in the vicinity, both in the private and state sector - including Harborne Primary School and Blue Coat School.

Entrance Hall



Carpeted flooring, ceiling light point, ceiling chandelier pendant, radiator and storage cupboard.

Front Reception Room



Carpeted flooring, ceiling light point, bay window to front elevation, fireplace with feature exposed brick surround, radiator, fitted bar and archway with corbel design leading to rear reception room.

Rear Reception Room



Carpeted flooring, gas fire with feature marble surround, two original stained glass windows to side elevation, radiator, ceiling chandelier pendant with original ceiling rose, bay window to rear elevation and archways with corbel design leading to front reception room and dining room.

Main Dining Room



Carpeted flooring, ceiling light pendant with original

ceiling rose, two wall light points, radiator, fitted storage unit, double glazed window to rear elevation and archway with corbel design leading to rear reception room.

Living Room



Wood flooring, ceiling light pendant with original ceiling rose, gas fireplace with exposed brick feature surround and archway with corbel design leading to second dining room.

Dining Room

Wood flooring, ceiling light pendant with original ceiling rose, skylight, radiator and archway leading to kitchen.

Kitchen



Tiled flooring, two ceiling light points, integrated appliances, two gas ovens, gas hob and ample storage.

Storage Room

Wood flooring, ceiling light point and fitted storage cupboards.

Utility Room / Secondary Kitchen



Tiled flooring, ceiling spotlight points, window to rear elevation, door to rear elevation, gas oven and hob.

Side Access

Sheltered space with added benefit of storage.

Garage

Two ceiling light points, electric door to front elevation, ample storage space.

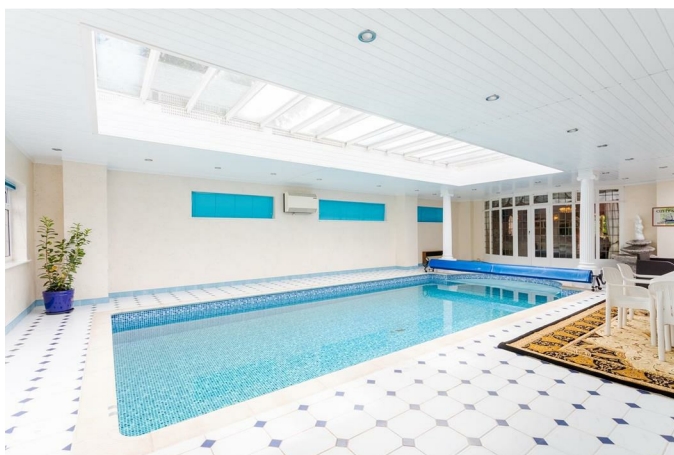
Rear Hallway

Tiled flooring, radiator and ceiling light point.

Study

Wood flooring, ceiling spotlight points and two hallway facing windows.

Indoor Bar and Swimming Pool



Tiled flooring, ceiling spotlight points, four windows to rear elevation, two windows to side elevation, French door to rear elevation, four radiators, two ceiling skylights, sauna, bar area and swimming pool.

First Floor Landing



Ceiling chandelier pendant, window to front elevation, two radiators, carpeted flooring and four wall light points.

Master Bedroom



Carpeted flooring, window to front elevation, two ceiling light pendants with original ceiling rose, fitted wardrobe with vanity area and radiator.

Master Bedroom EN-Suite



Tiled flooring, two obscure windows to side elevation, ceiling spotlight points, two heated towel rails, low flush W.C, bidet, jacuzzi bath, shower cubicle and double hand wash basin unit.

Bedroom Two



Carpeted flooring, window to rear elevation, ceiling light pendant, radiator and fitted wardrobes.

Bedroom Three



Carpeted flooring, bay window to rear elevation, radiator, ceiling light pendant and fitted wardrobes.

Bedroom Three EN-Suite



Tiled flooring, tiled walls, ceiling spotlight points, double hand wash basin unit, low flush W.C and shower cubicle.

Bedroom Four



Carpeted flooring, window to front elevation, two ceiling light pendants with original ceiling rose, fitted wardrobe with vanity area and radiator.

Garden



Large patio, maintained lawn, hedges to boundaries and summerhouse.

General Information

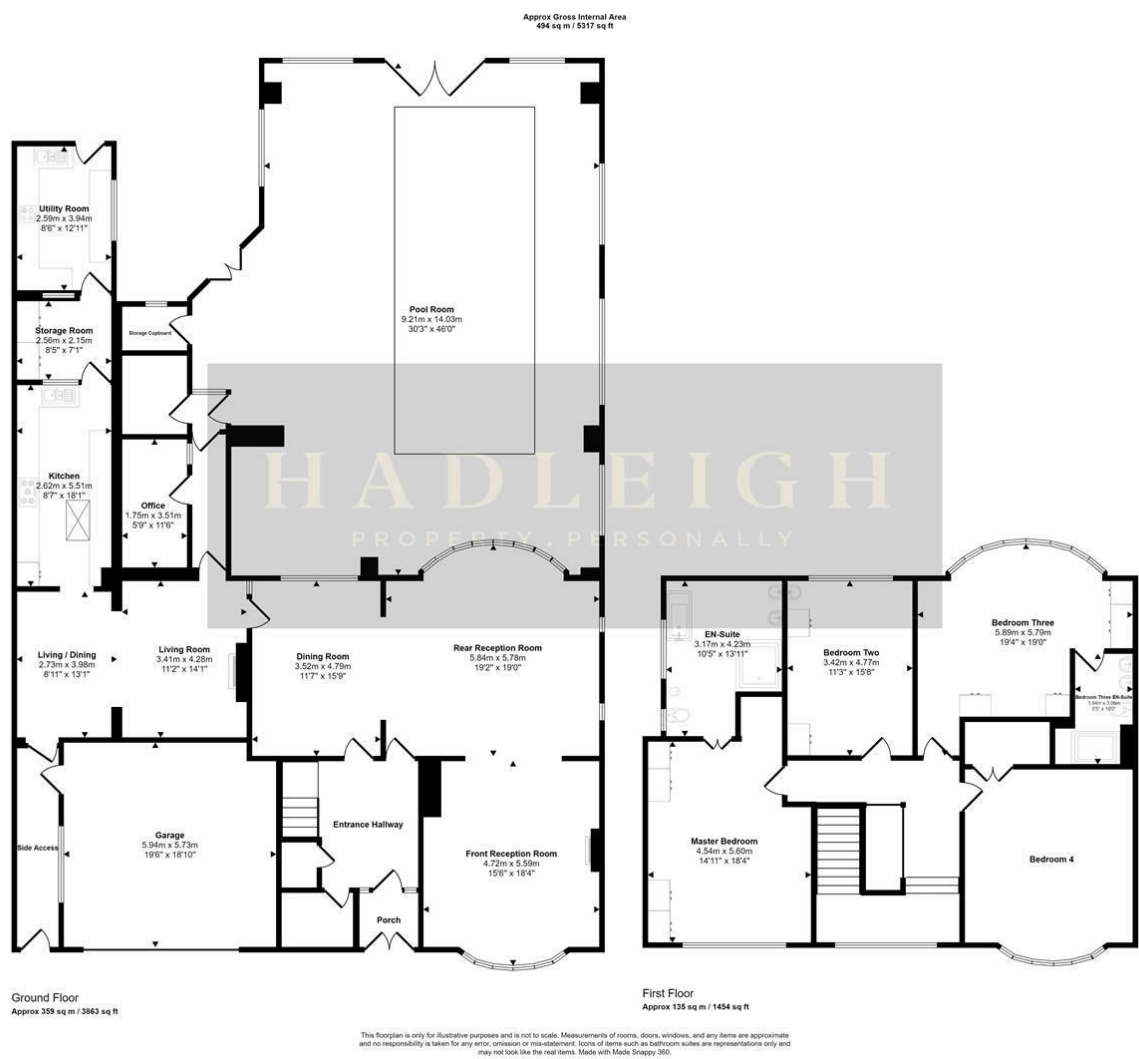
We have been advised the following information, however we advise for you to confirm this with your legal representative as Hadleigh Estate Agents cannot be held accountable.

Tenure - Freehold

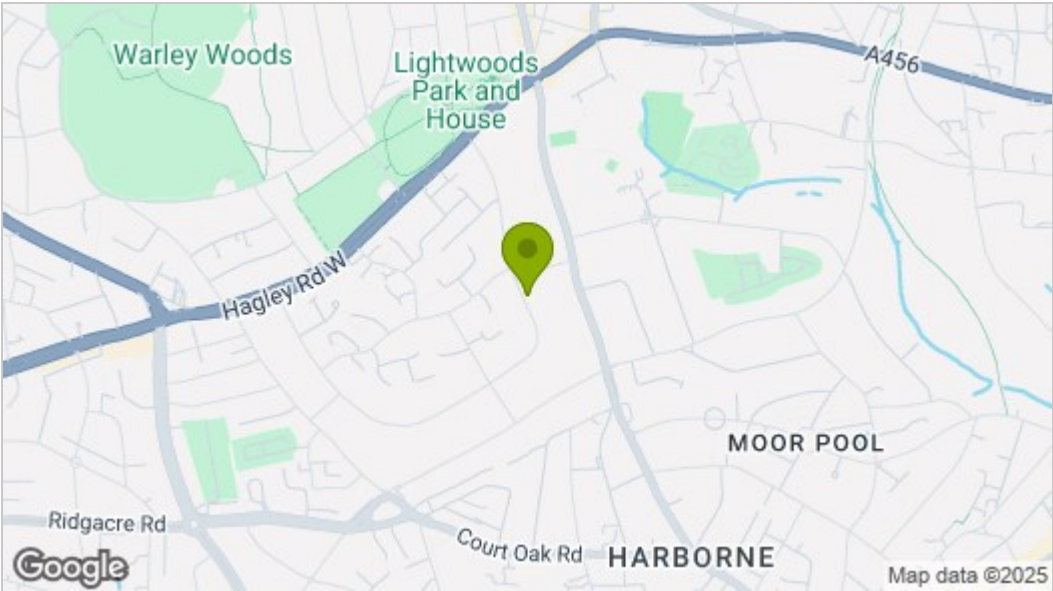
Council Tax Band - G

EPC - TBC

Floor Plan



Area Map



These particulars, whilst believed to be accurate are set out as a general outline only for guidance and do not constitute any part of an offer or contract. Intending purchasers should not rely on them as statements of representation of fact, but must satisfy themselves by inspection or otherwise as to their accuracy. No person in this firms employment has the authority to make or give any representation or warranty in respect of the property.

Energy Efficiency Graph

